

Mesa Union School District

Agenda for the Board Meeting of the Board of Trustees to be held on Tuesday, July 21, 2020 at 6:00 p.m. in the School Multi-Purpose Room located at 3901 North Mesa School Road, Somis, California 93066 and via tele-conference at <https://meet.google.com/dqt-egqi-pte>

The Regular Board Meeting of the Board of Trustees will begin at 6:00 p.m. for open session. A complete agenda packet is available at the District Office, 3901 North Mesa School Road, Somis, 72 hours prior to a regularly scheduled meeting and online at www.mesaschooldistrict.org.

1. CALL TO ORDER AND RECOGNITION OF A QUORUM

Time _____	Present	Absent
Dr. Neil Canby, President	_____	_____
Mrs. Krista Nowak, Vice-President	_____	_____
Mr. Steven Sullivan, Clerk	_____	_____
Mrs. Jayme Dryden, Trustee	_____	_____
Mrs. Roddie Villa, Trustee	_____	_____
Dr. Raul Ramirez, Superintendent	_____	_____
Mrs. Tami Peterson, Chief Business Official	_____	_____
Mrs. Erica Magdaleno, Executive Assistant	_____	_____

2. ADOPTION OF AGENDA

Usually an agenda covers an entire session, in which case it is the order of business for that session and is adopted by majority vote of the assembly. Thereafter, no change can be made in the agenda except by a two-thirds vote or by unanimous consent. At the point of adoption of the agenda, any Board member or the Superintendent can request that the agenda be reordered.

3. OFFICIAL OPENING - PLEDGE OF ALLEGIANCE

4. INFORMATION ITEMS:

A. Mesa Union School District's School Reopening Plans

5. AUDIENCE TO ADDRESS BOARD OF TRUSTEES - COMMENTS BY THE PUBLIC

All individuals are invited to speak to the Board during public comment on matters related to the District. If you wish to address the Board, please plan to complete a Speaker Form one hour prior to the start of the meeting. Forms are available in the District Office, at the Board meeting and online at www.mesaschooldistrict.org.

6. ACTION/DISCUSSION ITEMS: ACTION

A. Consideration of the approval of the ratification of Change Order #1, Change Order #3, Change Order #4, Change Order #5 and Change Order #6 with Dash Construction.

It is the recommendation of the District Administration that the Board of Trustees approve the ratification of Change Order #1, Change Order #3, Change Order #4, Change Order #5 and Change Order #6 with Dash Construction.

PLEASE SEE AGENDA ITEM 6A IN THE PACKET

7. FUTURE MEETINGS

- A. Tuesday, August 4, 2020 at 6:00 p.m., Special Board Meeting
- B. Tuesday, August 18, 2020 at 6:00 p.m., Regular Board Meeting

Mesa Union School District

Agenda for the Board Meeting of the Board of Trustees to be held on Tuesday, July 21, 2020 at 6:00 p.m. in the School Multi-Purpose Room located at 3901 North Mesa School Road, Somis, California 93066 and via tele-conference at <https://meet.google.com/dqt-egqi-pte>

8. ADJOURNMENT

Time: _____

In accordance with requirement of the Americans with Disabilities Act and related federal regulations, individuals who require special accommodation, including but not limited to an American sign language interpreter, accessible seating or documentation in accessible formats, should contact the Superintendent's office at least two days before the meeting.

Plans for School Reopening

MESA UNION SCHOOL DISTRICT

JULY 21, 2020



GUIDING PRINCIPLES



- Health, Safety and Wellness
- Instruction–Focus on Equitable Learning Opportunities
- Listening and Engaging our Community/Families/Stakeholders
- Lead with a lens of equity and access



**LEARNING &
ENGAGEMENT**



**HEALTH &
WELLNESS**



**LEADERSHIP &
GOVERNANCE**

Drivers for School Reopening



**FACILITIES &
OPERATIONS**



**COMMUNITY &
FAMILY
ENGAGEMENT**



TIMELINE FOR REOPENING

MAY

- Meetings with Mesa Union Staff.
- Preliminary reopening plans.
- Distance Learning Survey (Parents/Families)

JUNE

- Superintendent Community Gathering- Thurs., June 4
- Staff Survey on School Reopening

- Planning Meetings with Mesa Union Staff.
- Developed reopening models for consideration.
- Developed Drivers for School Reopening to organize needs, determine priorities and identify places for collaboration.

JULY

- Superintendent Community Gathering on Reopening- Thurs., July 23
- Parent/Family Survey on School Reopening
- Board Report & Discussion- Tues., July 21

- Ongoing planning meetings with Mesa Union Staff.
- Developing logistics around Drivers for School Reopening.

AUGUST

- Board Meeting-Tues., Aug. 4
- Board Meeting-Tues., Aug. 18
- Start of School Year- Wed., Aug. 19

- Ongoing planning meetings with Mesa Union Staff.
- Developing logistics around Drivers for School Reopening.

BACKGROUND & OVERVIEW



Statewide

- Statewide Reopening Plans in 4 Phases
- Senate Bill 98 approved in June 2020. Provides guidance and expectations to districts for 2020-2021.
- Governor announced roll-back of reopening plans on Monday, July 13. Ventura County on watchlist.
- Governor announced counties on watchlist would need to open through distance learning on Friday, July 17. County will need to have 14 consecutive days of declining cases to be able to open schools in physical setting.

OVERVIEW OF SB 98



CA Senate Bill 98– What we know...

- Learning Continuity and Attendance Plan
 - Replaces LCAP for 2020-2021
 - Board approved by September 30, 2020.
- Provides three options for providing instruction in 2020-21:
 - In-person instruction
 - Distance Learning
 - Hybrid instruction model through in-person and Distance Learning
- District's should provide in-person instruction “to the greatest extent possible.”
- Independent Study is unchanged by SB 98.

OVERVIEW OF SB 98



CA Senate Bill 98– What we know...

- Annual Instructional Minutes
- Maintains Minimum School day minutes requirement(s)
 - T/K = 180 min.
 - Grades 1-3 = 230
 - Grades 4-12 = 240
- Maintains Instructional Days (length of year) requirement(s) and penalty
- Suspends PE Minutes requirement.

OVERVIEW OF SB 98



CA Senate Bill 98– What we know...

- LEAs may offer Distance Learning under one of two circumstances:
 - On an LEA or schoolwide level as a result of order/guidance from a state or local public health officer
 - Does not require LEA to obtain authorization from public health official
 - Distance learning should be part of instructional model that adheres to most recent available public health orders/guidance.
 - For students who are medically fragile, would be put at risk by in-person instruction, or who are self-quarantining because COVID-19 exposure
 - No requirement for medical note or verification

OVERVIEW OF SB 98



CA Senate Bill 98– What we know...

- If using Distance Learning,
 - District's must do the following for every student:
 - Track/monitor student's daily engagement in distance learning
 - Keep a weekly record documenting a student's synchronous or asynchronous engagement each school day, verifies participation, and tracks student assignments
 - Regularly communicate with parents and guardians regarding a student's academic progress.
 - Districts must develop written procedures for re-engaging students who are absent from distance learning for more than 3 school days or 60% of the instruction days in a week.

Learning Models



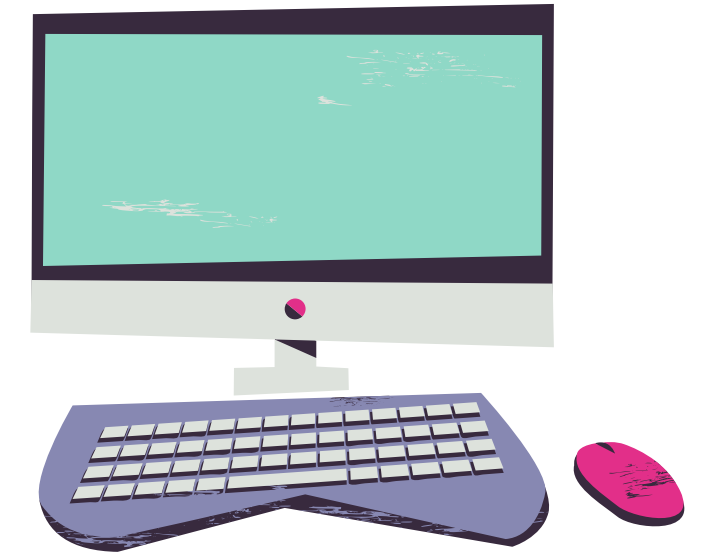
School operations largely return to full face-to-face instruction, but wherever possible, we will accommodate students, staff, and faculty who need or prefer to operate remotely due to continuing pandemic conditions.

Full Reopening

Hybrid Learning



Student groups have safe access to in-person instruction and supports some days, and remote learning other days, with limits and restrictions imposed by public health officials.



For public health reasons, campuses must continue with full remote instruction, both live and recorded, with supports and modifications as needed

Distance Learning

FULL REOPENING MODEL



Instructional Design

- Positive class community, standards-aligned curricula containing resources that are inclusive of learning needs.
- Shared assessments to generate visible evidence of student learning and inform instruction, opportunities for student voice and agency
- Effective utilization of flexible grouping strategies.

Logistics

- Students attend school 4-5 days/week with appropriate distancing measures in place.
- Elementary:
 - Class sizes of 10-20
 - Teacher reassignment and hiring may be required
- Secondary
 - Requires a cohort model, alternating class periods every other day
- More intensive operations needs including sanitizing, screening, transportation, meal service.
- Remote options available for students who cannot attend in person.

HYBRID LEARNING MODEL



Instructional Design

- Positive class community, standards-aligned curricula containing resources that are inclusive of learning needs.
- Shared assessments to generate visible evidence of student learning and inform instruction, opportunities for student voice and agency
- Effective lesson design to achieve a balance of synchronous and asynchronous learning.
- Effective utilization of technology to facilitate remote learning component.

Logistics

- Students are divided into cohorts and report to campus 2 days a week.
- Allow for continuation of MTSS efforts of the past (Wednesdays).
- Students with additional needs may attend more frequently.
- Future decision around middle school electives.
- Students engage in remote learning when not on campus.
- Remote options available for students who cannot attend in person.

HYBRID LEARNING MODEL



Instructional Design

- Positive class community, standards-aligned curricula containing resources that are inclusive of learning needs.
- Shared assessments to generate visible evidence of student learning and inform instruction, opportunities for student voice and agency
- Effective lesson design to achieve a balance of synchronous and asynchronous learning.
- Effective utilization of technology to facilitate remote learning component.

Logistics

- Students are divided into cohorts and report to campus 2 days a week.
- Allow for continuation of MTSS efforts of the past (Wednesdays).
- Students with additional needs may attend more frequently.
- Future decision around middle school electives.
- Students engage in remote learning when not on campus.
- Remote options available for students who cannot attend in person.

HYBRID LEARNING MODEL



Model A- Elementary

Monday	Tuesday	Wednesday	Thursday	Friday
Cohort A On campus	Cohort A On campus	Blended Learning Support	Cohort B On campus	Cohort B On campus
Staggered Start Times Temperature Checks Grab and Go Breakfast or in class Breakfast	Staggered Start Times Temperature Checks Grab and Go Breakfast or in class Breakfast	Blended Learning MTSS Support Planning PD PLC Staff Meetings	Staggered Start Times Temperature Checks Grab and Go Breakfast or in class Breakfast	Staggered Start Times Temperature Checks Grab and Go Breakfast or in class Breakfast
In Class Instruction	In Class Instruction		In Class Instruction	In Class Instruction
Brain Break and Structured Movement	Brain Break and Structured Movement		Brain Break and Structured Movement	Brain Break and Structured Movement
In Class Instruction	In Class Instruction		In Class Instruction	In Class Instruction
Grab and Go Lunch/ supervised break	Grab and Go Lunch/ supervised break		Grab and Go Lunch/ supervised break	Grab and Go Lunch/ supervised break
In Class Instruction	In Class Instruction		In Class Instruction	In Class Instruction
Dismissal Social Distancing Busing	Dismissal Social Distancing Busing		Dismissal Social Distancing Busing	Dismissal Social Distancing Busing
Cleaning/sanitation	Cleaning/sanitation		Cleaning/sanitation	Cleaning/sanitation

Model B- Elementary

Monday	Tuesday	Wednesday	Thursday	Friday
Cohort A On campus	Cohort B On campus	Blended Learning Support	Cohort A On campus	Cohort B On campus
Staggered Start Times Temperature Checks Grab and Go Breakfast or in class Breakfast	Staggered Start Times Temperature Checks Grab and Go Breakfast or in class Breakfast	Blended Learning MTSS Support Planning PD PLC Staff Meetings	Staggered Start Times Temperature Checks Grab and Go Breakfast or in class Breakfast	Staggered Start Times Temperature Checks Grab and Go Breakfast or in class Breakfast
In Class Instruction	In Class Instruction		In Class Instruction	In Class Instruction
Brain Break and Structured Movement	Brain Break and Structured Movement		Brain Break and Structured Movement	Brain Break and Structured Movement
In Class Instruction	In Class Instruction		In Class Instruction	In Class Instruction
Grab and Go Lunch/ supervised break	Grab and Go Lunch/ supervised break		Grab and Go Lunch/ supervised break	Grab and Go Lunch/ supervised break
In Class Instruction	In Class Instruction		In Class Instruction	In Class Instruction
Dismissal Social Distancing Busing	Dismissal Social Distancing Busing		Dismissal Social Distancing Busing	Dismissal Social Distancing Busing
Cleaning/sanitation	Cleaning/sanitation		Cleaning/sanitation	Cleaning/sanitation

HYBRID LEARNING MODEL



Model A- Middle School

Monday	Tuesday	Wednesday	Thursday	Friday
Cohort A On campus	Cohort A On campus	Blended Learning Support	Cohort B On campus	Cohort B On campus
Staggered Start Times Temperature Checks Grab and Go Breakfast or in class Breakfast	Staggered Start Times Temperature Checks Grab and Go Breakfast or in class Breakfast	Blended Learning MTSS Support Planning PD PLC Staff Meetings	Staggered Start Times Temperature Checks Grab and Go Breakfast or in class Breakfast	Staggered Start Times Temperature Checks Grab and Go Breakfast or in class Breakfast
In Class Instruction Period 1/2	In Class Instruction Period 1/2		In Class Instruction Period 1/2	In Class Instruction Period 1/2
Brain Break and Structured Movement	Brain Break and Structured Movement		Brain Break and Structured Movement	Brain Break and Structured Movement
MTSS Period 3	MTSS Period 3		MTSS Period 3	MTSS Period 3
In Class Instruction Period 4/5	In Class Instruction Period 4/5		In Class Instruction Period 4/5	In Class Instruction Period 4/5
Grab and Go Lunch/ supervised break	Grab and Go Lunch/ supervised break		Grab and Go Lunch/ supervised break	Grab and Go Lunch/ supervised break
In Class Instruction Period 6/7	In Class Instruction Period 6/7		In Class Instruction Period 6/7	In Class Instruction Period 6/7
Dismissal Social Distancing Busing	Dismissal Social Distancing Busing		Dismissal Social Distancing Busing	Dismissal Social Distancing Busing
Cleaning/sanitation	Cleaning/sanitation		Cleaning/sanitation	Cleaning/sanitation

Model B- Middle School

Monday	Tuesday	Wednesday	Thursday	Friday
Cohort A On campus	Cohort B On campus	Blended Learning Support	Cohort A On campus	Cohort B On campus
Staggered Start Times Temperature Checks Grab and Go Breakfast or in class Breakfast	Staggered Start Times Temperature Checks Grab and Go Breakfast or in class Breakfast	Blended Learning MTSS Support Planning PD PLC Staff Meetings	Staggered Start Times Temperature Checks Grab and Go Breakfast or in class Breakfast	Staggered Start Times Temperature Checks Grab and Go Breakfast or in class Breakfast
In Class Instruction Period 1/2	In Class Instruction Period 1/2		In Class Instruction Period 1/2	In Class Instruction Period 1/2
Brain Break and Structured Movement	Brain Break and Structured Movement		Brain Break and Structured Movement	Brain Break and Structured Movement
MTSS Period 3	MTSS Period 3		MTSS Period 3	MTSS Period 3
In Class Instruction Period 4/5	In Class Instruction Period 4/5		In Class Instruction Period 4/5	In Class Instruction Period 4/5
Grab and Go Lunch/ supervised break	Grab and Go Lunch/ supervised break		Grab and Go Lunch/ supervised break	Grab and Go Lunch/ supervised break
In Class Instruction Period 6/7	In Class Instruction Period 6/7		In Class Instruction Period 6/7	In Class Instruction Period 6/7
Dismissal Social Distancing Busing	Dismissal Social Distancing Busing		Dismissal Social Distancing Busing	Dismissal Social Distancing Busing
Cleaning/sanitation	Cleaning/sanitation		Cleaning/sanitation	Cleaning/sanitation

STAKEHOLDER INPUT

Staff Engagement

- Survey released in early June
- 40 Staff Responses
- Zoom Meetings
 - Grade Spans
 - TK-2; 3-5; 6-8

Parent/Family Engagement

- Survey open through Mon. July 20.
- 353 Responses* (English)
- 22 Responses* (Spanish)
- 141 Responses* indicating desire for Distance Learning/Independent Study

Questions & Comments

Date: 6/18/2020

Change Order Proposal No. 1

From: Dariush Shahnava
President/ CEO
DASH Construction Company, Inc.
CSLB: 869505, A, B, C 8, C13, C33

Mailing Address:

P.O. Box 261321
Encino, CA 91426
Tel. (818) 620-7547

TO: David Norris
David Norris Director of Maintenance & Operation & Transportat

Project: Installation of Security Gates, Fencing, & Surveillance System

Project Location: Mesa Union School
3901 N. Mesa School Road
Somis, CA 93066

Dear Mr. Norris,

We are pleased with the opportunity to submit a proposal to furnish all materials and perform all labor necessary to furnish and install the following items listed below:

- As requested, to change the New Fence color from Black to Blue for the amount
- of: \$ 2,112.00

Cost Breakdown:

- Material Price Different: \$1,760.00
- P + O : \$ 352.00
- Total: \$ 2,112.00

Sign:



Date:

6/18/20

- ACCEPTANCE -

You are hereby authorized to proceed with the work as per above, and I agree to pay the amount mentioned in said proposal.

Name

Jeffery D. Turner Sign

Date:

4/18/2020

Jeffery D. Turner

Date: 6/18/2020

Change Order Proposal No. 3
RFI No. 3

From: Dariush Shahnavaz
President/ CEO
DASH Construction Company, Inc.
CSLB: 869505, A, B, C 8, C13, C33

Mailing Address:

P.O. Box 261321
Encino. CA 91426
Tel. (818) 620-7547

TO: David Norris
David Norris Director of Maintenance & Operation & Transportation

Project: Installation of Security Gates, Fencing, & Surveillance System

Project Location: Mesa Union School
3901 N. Mesa School Road
Somis, CA 93066

Dear Mr. Norris,

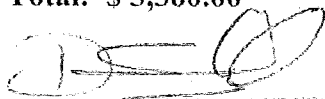
We are pleased with the opportunity to submit a proposal to furnish all materials and perform all labor necessary to furnish and install the following items listed below:

- Per request: Replace the Panic bars Model: VON DUPRIN NO.22 WITH Panic Bars: 98/99 RIM EXIT DEVICE, for the amount of: \$ 3,360.00

Cost Breakdown:

- Material: \$ 2,800.00
- P + O : \$ 560.00
- Total: \$ 3,360.00**

Sign:



Date:

6/18/2020

- ACCEPTANCE -

You are hereby authorized to proceed with the work as per above, and I agree to pay the amount mentioned in said proposal.

Name

Jeffery P. Turner

Sign

Jeffery P. Turner

Date:

6/18/2020

Date: 6/18/2020

Change Order Proposal No. 4
RFI No. 4

From: Dariush Shahnava
President/ CEO
DASH Construction Company, Inc.
CSLB: 869505, A, B, C 8, C13, C33

Mailing Address:

P.O. Box 261321
Encino, CA 91426
Tel. (818) 620-7547

TO: David Norris
David Norris Director of Maintenance & Operation & Transportation

Project: Installation of Security Gates, Fencing, & Surveillance System

Project Location: Mesa Union School
3901 N. Mesa School Road
Somis, CA 93066

Dear Mr. Norris,

We are pleased with the opportunity to submit a proposal to furnish all materials and perform all labor necessary to furnish and install the following items listed below:

- Per request: Replace the lockset STAINLESS STEEL GATE LOCKSET CKSET: SIMPLEX L1021B WITH EXIT DEVICE CONTROL, LP1000 SERIES, for the amount of: \$ 780.00

Cost Breakdown:

- Material: \$ 650.00
- P + O : \$ 130.00
Total: \$ 780.00

Sign:



Date: 6/18/2020

- ACCEPTANCE -

You are hereby authorized to proceed with the work as per above, and I agree to pay the amount mentioned in said proposal.

Name

Jeffery D. Turner

Sign

Jeffery D. Turner

Date:

6/18/2020

Date: 6/18-2020

Change Order Proposal No. 5
RFI No. 5

From: Dariush Shahnavaz
President/ CEO
DASH Construction Company, Inc.
CSLB: 869505, A, B, C 8, C13, C33

Mailing Address:

P.O. Box 261321¹¹
Encino, CA 91426
Tel. (818) 620-7547

TO: David Norris
David Norris Director of Maintenance & Operation & Transportation

Project: Installation of Security Gates, Fencing, & Surveillance System

Project Location: Mesa Union School
3901 N. Mesa School Road
Somis, CA 93066

Dear Mr. Norris,

We are pleased with the opportunity to submit a proposal to furnish all materials and perform all labor necessary to furnish and install the following items listed below:

- To avoid the existing building foundation, we will move the new fence line 2Ft to the south. Adjust spacing of fence post on west side of gate to 3' 7 1/2" between the two fence posts. Provide a return back to the building with a filler section of fencing.
- According Plan sheet A3.00 Detail No. 6 and approved sketch.
- Description of the work has to be done to repair the damaged foundation. we will installing: Doweling with epoxy, and rebars, then pouring concrete, installing the cover wood and sealing, also extra concrete to install in the area, where we removed the red brick. It will be done in two days with a crew of 2 workers.
- We will revise the breakdown base on the work description,
- for the amount of: \$ 4,025.00

Cost Breakdown:

- Labor: \$2,400.00
- Materials: \$ 1,100.00, (Includes: Concrete, Rebars, Epoxies, Wood, Sealing, Fence, Posts)

- 10% P + 5% O : \$ 525.00.
Total: \$ 4,025.00

Sign:



Date:

6/19/20

- ACCEPTANCE -

You are hereby authorized to proceed with the work as per above, and I agree to pay the amount mentioned in said proposal.

Name

Sign

Date:

Jeffery D. Turner

Jeffery D. Turner

6/19/2020-

Date: 7/7/2020

Change Order Proposal No. 6
RFI No. 7

From: Dariush Shahnavaaz
President/ CEO
DASH Construction Company, Inc.
CSLB: 869505, A, B, C 8, C13, C33

Mailing Address:

P.O. Box 261321``
Encino. CA 91426
Tel. (818) 620-7547

TO: David Norris
Director of Maintenance & Operation & Transportation

Project: Installation of Security Gates, Fencing, & Surveillance System

PO No. : B320-00071

Project Location: Mesa Union School, 3901 N. Mesa School Road, Somis, CA 93066

Dear Mr. Norris,

We are pleased with the opportunity to submit a proposal to furnish all materials and perform all labor necessary to furnish and install the following items listed below:

- **Refer to RFI No.7: Demo and removal of app. 400 SF of concrete on landing area, doweling with epoxy, installation of rebars, and pouring the concrete. It will be done in two days with a crew of 2 workers for the amount of: \$ 6,100.00**

Cost Breakdown:

- Labor: \$3,600.00
- Materials: \$ 2,500.00
- Total: \$ 6,100.00**

Sign: DARIUSH SHAHNAVAZ

Date: 7/7/2020

- **ACCEPTANCE** -You are hereby authorized to proceed with the work as per above, and I agree to pay the amount mentioned in said proposal.

Sign



Date:

07/08/2020